

Emily's Artful Days - Orange Peel Quilt

Quilt Designed by Lucy A. Fazely

Finished Quilt Approx. 74" x 82" - Finished Block Size: 8" x 8"

Emily's Artful Days fabrics by Exclusively Quilters - Style #4026

Fabric Requirements: Based on 42" wide fabric

2-1/3 yards black floral (#60926-8)
3/4 yard blue floral (#61125-2)
3/4 yard yellow floral (#61125-4)
3/4 yard navy floral (#61125-25)
3/4 yard red wavy lines (#61126-1)
3/4 yard blue wavy lines (#61126-2)
1-7/8 yards navy mini floral (#61127-2)
3/4 yard red mini floral (#61127-1)
3/4 yard red paisley (#61128-1)
3/4 yard blue paisley (#61128-2)
3/4 yard green paisley (#61128-6)
2-1/4 yards black solid (#400-888)
5-1/2 yards fabric for backing (#61125-2 suggested)
82" x 90" quilt batting

An added 1/8 to 1/2 yard is added to all yardages to account for shrinkage, straightening, cutting errors and prints that may require special cutting to get the best results.

You should protect your investment in time and fabric by making sample blocks before cutting into your fabric because Exclusively Quilters will take no responsibility for replacing fabrics.

Shops who wish to kit this design are responsible for figuring yardage for their kits if they wish to reduce yardages.

Cutting Directions: All measurements based on a 1/4" seam allowance.

From the **black floral**:

Cut two 8-1/2" x 42" strips, subcut seven 8-1/2" x 10" pieces
Cut eight 4-1/2" x 42" strips for border
Cut nine 2-1/2" x 42" strips for binding

From the **blue floral**:

Cut two 8-1/2" x 42" strips, subcut seven 8-1/2" x 10" pieces

From the **yellow floral**:

Cut two 8-1/2" x 42" strips, subcut seven 8-1/2" x 10" pieces

From the **navy floral**:

Cut two 8-1/2" x 42" strips, subcut seven 8-1/2" x 10" pieces

From the **red wavy lines**:

Cut two 8-1/2" x 42" strips, subcut eight 8-1/2" x 10" pieces

From the **blue wavy lines**:

Cut two 8-1/2" x 42" strips, subcut seven 8-1/2" x 10" pieces

From the **navy mini floral**:

Cut eighteen 3-1/4" x 42" strips

From the **red mini floral**:

Cut two 8-1/2" x 42" strips, subcut eight 8-1/2" x 10" pieces

From the **red paisley**:

Cut two 8-1/2" x 42" strips, subcut eight 8-1/2" x 10" pieces

From the **blue paisley**:

Cut two 8-1/2" x 42" strips, subcut seven 8-1/2" x 10" pieces

From the **green paisley**:

Cut two 8-1/2" x 42" strips, subcut seven 8-1/2" x 10" pieces

From the **black solid**:

Cut eighteen 3-1/4" x 42" strips

Cut eight 1-1/2" x 42" strips

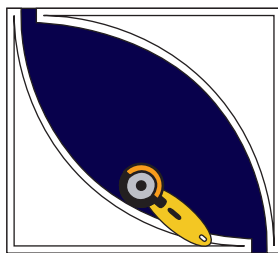
Emily's Artful Days - Orange Peel Quilt

Sewing Directions:

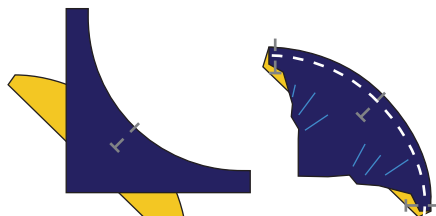
1. Using Arc Template, cut 72 black solid and 72 navy mini floral arcs from 3-1/4" strips.



2. From each 8-1/2" x 10" fabric pieces, cut 2 corner pieces using Corner Template as shown. Cut a total of 14 each black floral, yellow floral, navy floral, blue wavy lines, blue paisley and green paisley corner pieces. Cut a total of 15 red wavy lines and red mini florals and 16 red paisley corner pieces.



3. Lay a navy mini floral corner piece right sides together on top of a yellow floral arc piece, pinning together at center of curve. Pull outer edge corners around and pin to the arc. Stitch around curved edge with 1/4" seam easing the fabrics together. Press. Make



a total of seven yellow floral and navy mini floral half-blocks.

4. Make the following number of half-blocks with navy mini floral corner pieces:

- | | |
|-------------------|-------------------|
| 7 black floral | 7 blue floral |
| 7 navy floral | 8 red wavy lines |
| 7 blue wavy lines | 7 red mini floral |
| 8 red paisley | 7 blue paisley |
| 7 green paisley | |

5. Make the following number of half-blocks with black solid corner pieces:

- | | |
|-------------------|-------------------|
| 7 black floral | 7 blue floral |
| 7 navy floral | 8 red wavy lines |
| 7 blue wavy lines | 8 red mini floral |
| 8 red paisley | 7 blue paisley |
| 7 green paisley | 7 yellow floral |

6. Sew two half-blocks together to make the following number of each block:



yellow floral
Make 7



blue paisley
Make 7



blue floral
Make 7



red paisley
Make 8



blue wavy lines
Make 7



red wavy lines/black solid
green paisley/mini navy floral
Make 7



green paisley/black solid
navy floral/navy mini floral
Make 7



navy floral/black solid
black floral/navy mini floral
Make 7



red mini floral/black solid
red wavy lines/navy mini floral
Make 8



black floral/black solid
red mini floral/navy mini floral
Make 7

Emily's Artful Days - Orange Peel Quilt

Assembly:

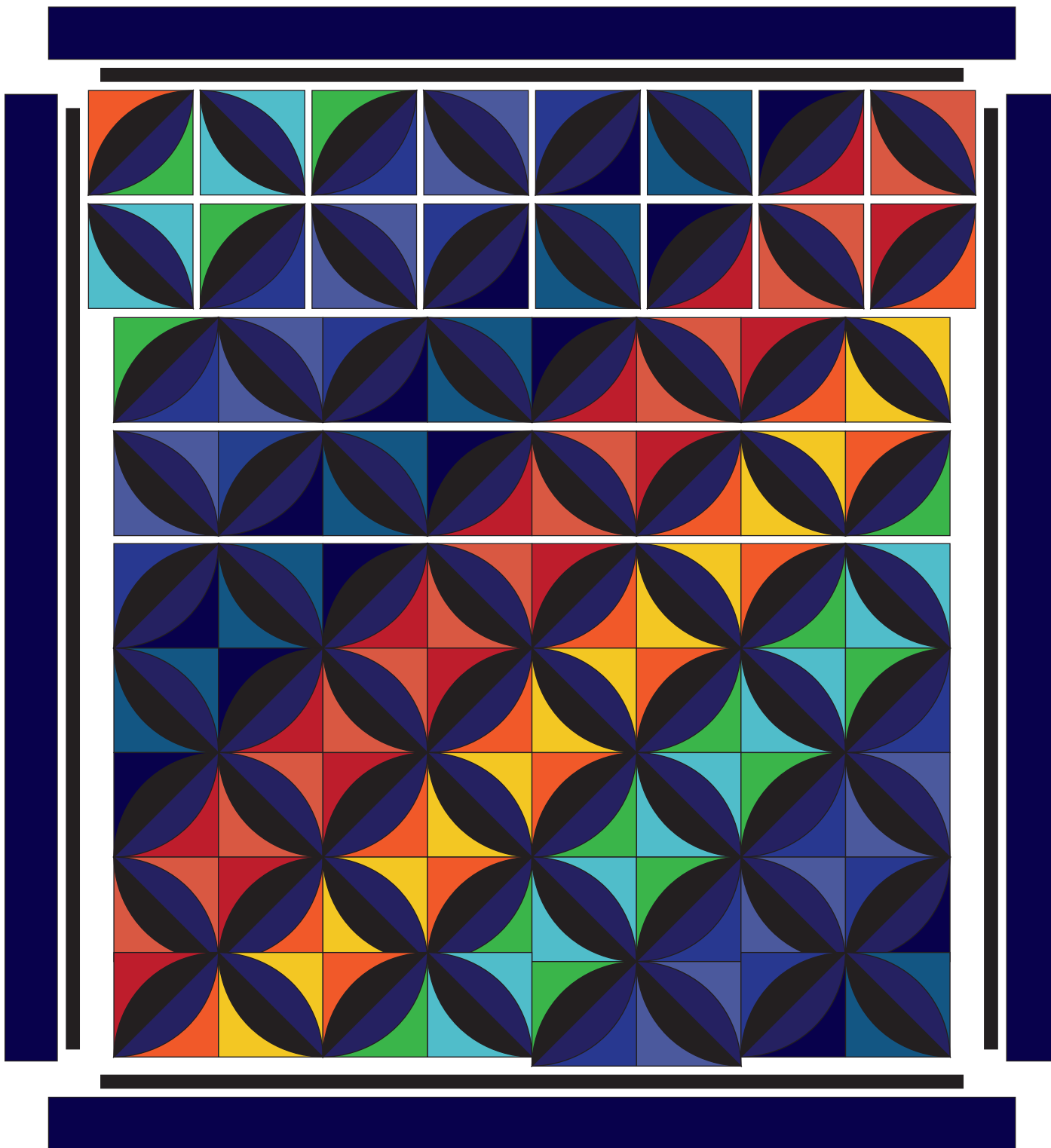
1. Referring to Quilt Layout and color quilt image, arrange all blocks in nine rows of eight blocks. Stitch blocks into rows. Sew rows together to create 64-1/2" x 72-1/2" unfinished quilt center.
2. Make four borders, each with two 1-1/2" black solid strips sewn together end-to-end. Sew borders to right and left sides of quilt center. Press and trim excess. Add remaining borders to top and bottom of quilt center. Press and trim excess.
3. Make four borders, each with two 4-1/2" black floral strips sewn together end-to-end. Sew borders to right and left sides of quilt center. Press and trim excess. Add remaining borders to top and bottom of quilt center. Press and trim excess.

Finishing:

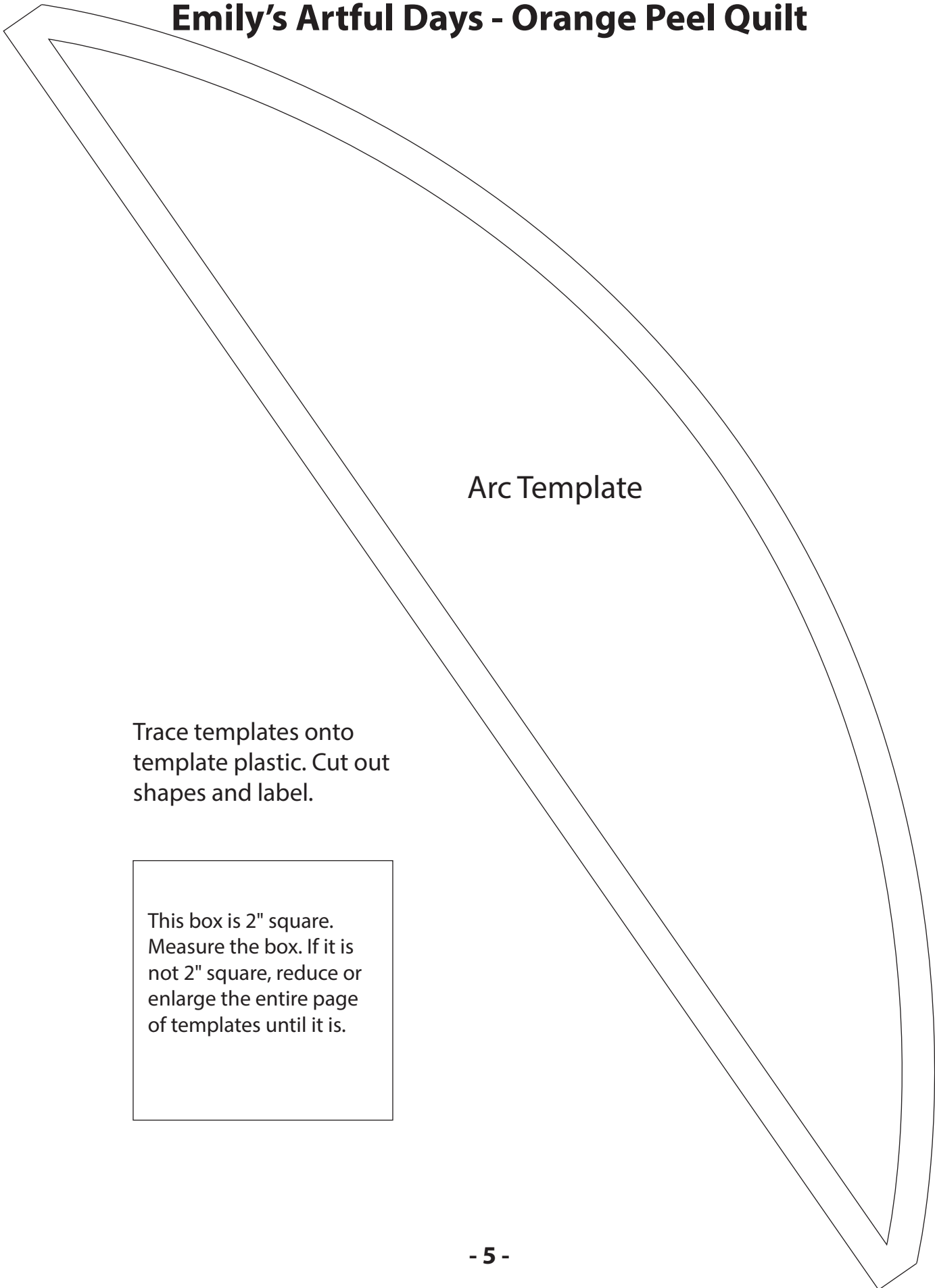
1. Cut backing into two equal lengths. Sew the two lengths of backing together along selvage edges creating a two-panel wide backing. Layer the backing, batting and quilt top. Quilt or tie as desired.
2. Prepare binding from nine 2-1/2" x 42" black floral strips. Sew strips together into one long binding strip. Press strip in half lengthwise.
3. Carefully trim backing and batting even with quilt top.
4. Leaving an 8" tail of binding, sew binding to top of quilt through all layers matching all raw edges. Miter corners. Stop approximately 12" from where you started. Lay both loose ends of binding flat along quilt edge. Where these two loose ends meet, fold them back on themselves and press to form a crease. Using this crease as your stitching line, sew the two open ends of the binding together right sides together. Trim seam to 1/4" and press open. Finish sewing binding to quilt.
5. Turn binding to back of quilt and blind stitch in place.

Emily's Artful Days - Orange Peel Quilt

Quilt Layout



Emily's Artful Days - Orange Peel Quilt



Arc Template

Trace templates onto
template plastic. Cut out
shapes and label.

This box is 2" square.
Measure the box. If it is
not 2" square, reduce or
enlarge the entire page
of templates until it is.

Emily's Artful Days - Orange Peel Quilt

